



INDUSTRIAL PARKS DEVELOPMENT CORPORATION

(Overview of Industrial Parks)



01

Overview of IPDC



02

Industrial Parks in Ethiopia



03

Infrastructure in our parks :
Value Proposition



04

Achievements & Sustainable



05

IThe Future: we grow together



Overview

MISSION

- Stimulating investment and creating employment
- Export growth and FX earnings
- Industrial clusters through forward/backward linkages
- Knowledge transfer and technology spillover
- Connections to global value chain
- Sustainable Growth and social equality

VISION

- To be an Innovative and Leading Eco-Industrial Parks Developer and Operator in Africa by 2030

- To develop and administer industrial parks, lease developed land and lease or transfer, through sale, constructions

- To prepare detail national Industrial parks master plan
- Receive land and serve as Industrial parks land bank

- 1050 Employees
- Paid up Capital : 2 Billion USD (2014)

Re- Established

2014

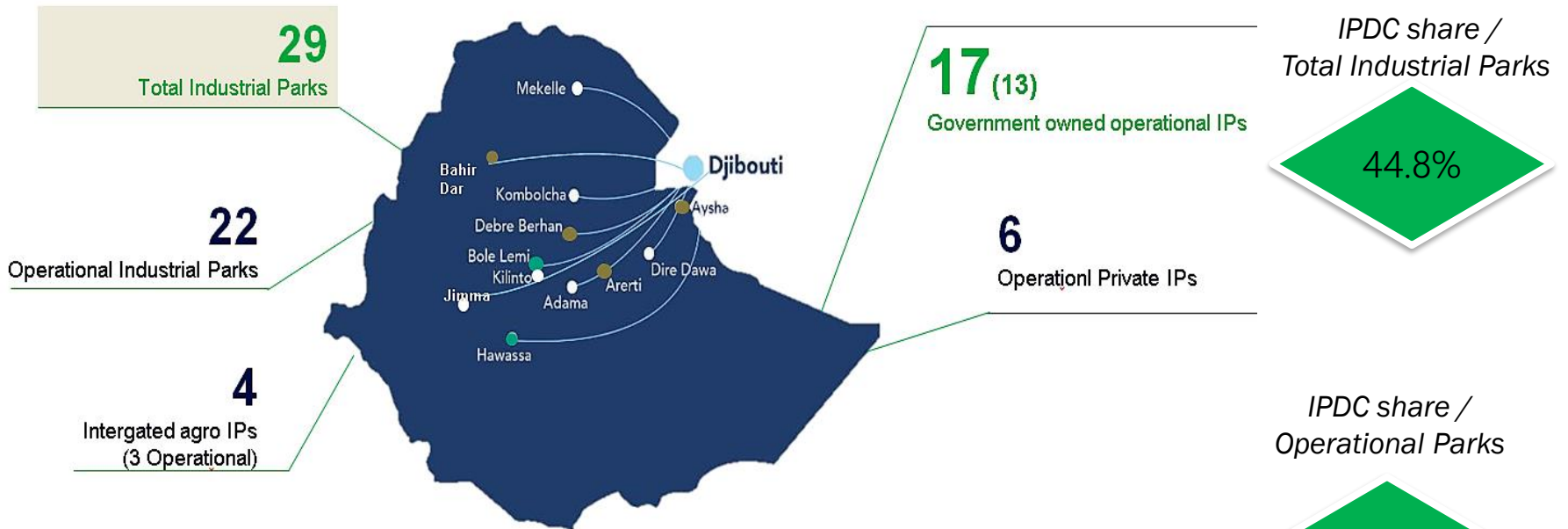
Industrial Parks
Development Corporation (IPDC)

Established

2012

Ethiopia Industrial Zone
Development Corporation (EIZDC)

Industrial Parks in Ethiopia



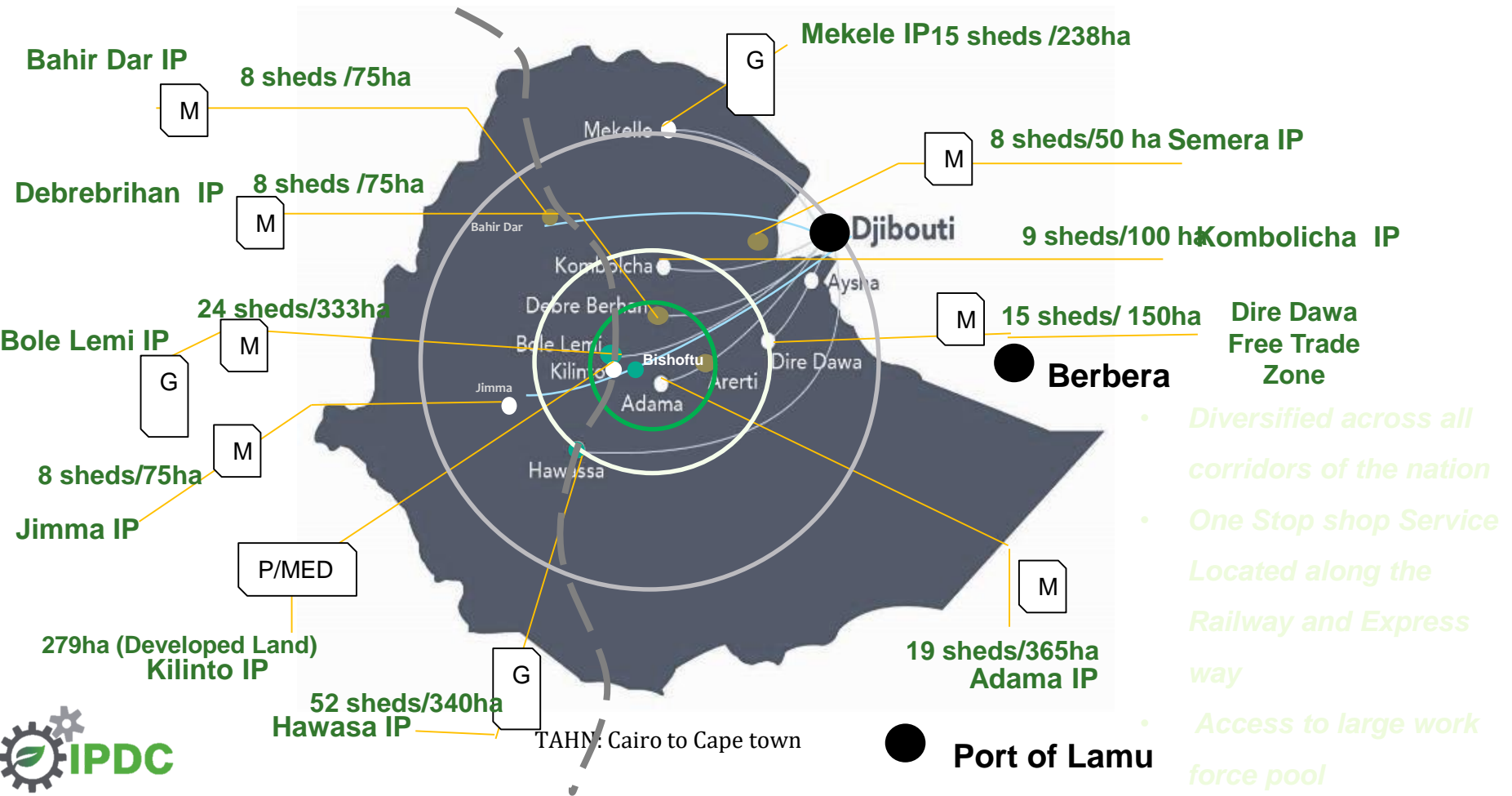
Source: EIC

Determinant Factors of Industrial Park site

- Near to cities proximity to Economic Activities and clustering Dynamics
- Onsite infrastructure – Land, Sheds, road, power, telecom, water supply, water treatment
- Environmental and Social Impact – Avoid environmental, social and cultural area
- Natural Resource – access to resource (agricultural, mining)



Industrial Parks Profile



- Diversified across all corridors of the nation
- One Stop shop Service
- Located along the Railway and Express way
- Access to large work force pool



Our Solution/Services



Developed Land

+600 ha Developed
(land)



Manufacturing Sheds

Size : 3,000 m² , 5,500 m² , 11,000 m²

**Security and Fire
Bridge**



**Undeveloped
Land
+18,000 ha**



Dedicated Power Substation

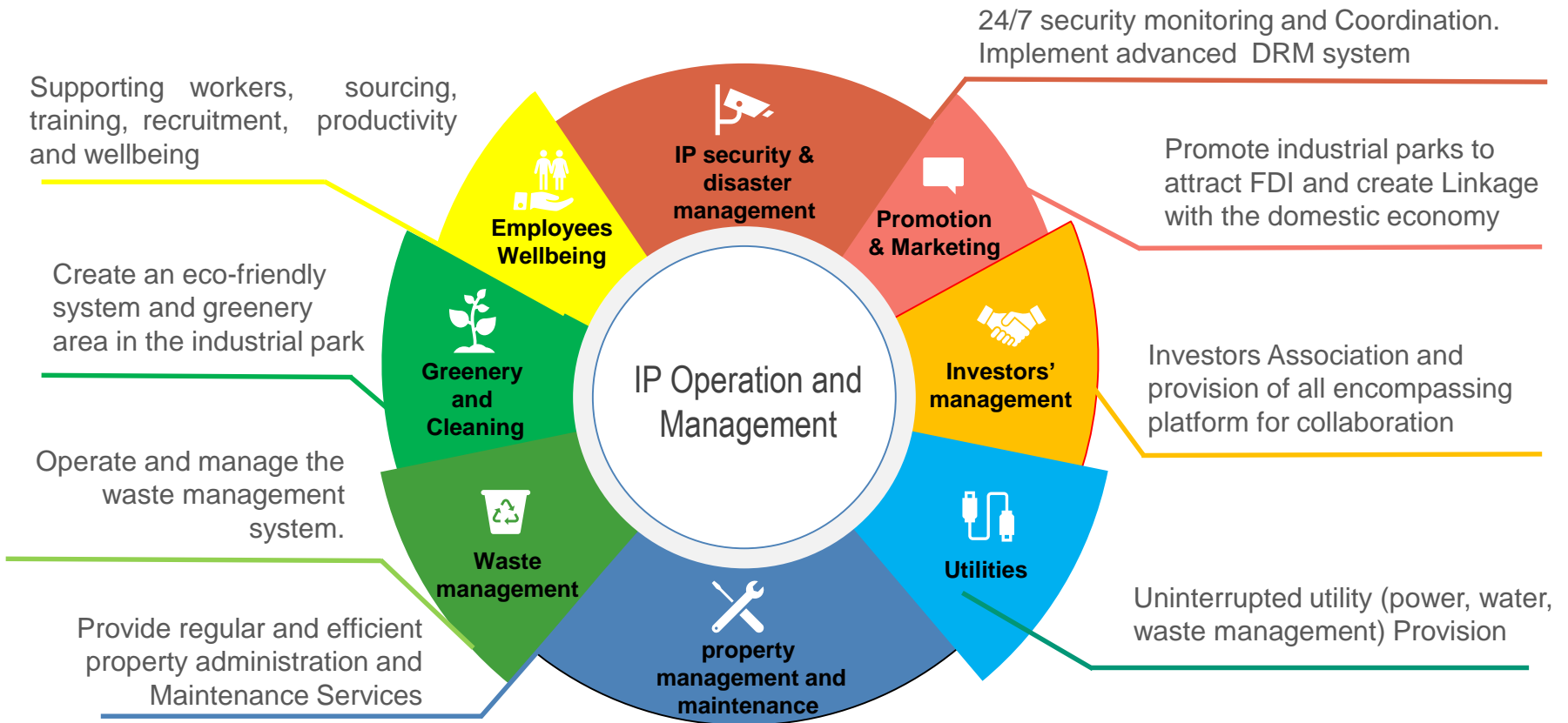


Water Treatment Facility (ZLD)



Data Center

Soft Services



One Stop Service (OSS) - A range of government Services are available on-site from banking, immigration, import and export licenses, work permits, Labour Affairs, Logistics and customs clearance in each industrial park.





asa Industrial Park

Value Propositions

- Internationally Certified Fire and Building Standards
- Our Parks Respects US & EU Import Requirements
Customs-Trade Partnership Against Terrorism (C-TPAT)
- Proximity to Major Market
COMESA (Population 400 million), EU, DCTS (UK)
- Sustainability and Eco – IPs
Zero-liquid-discharge treatment plant
Renewable Energy Source and Cheaper Tariff

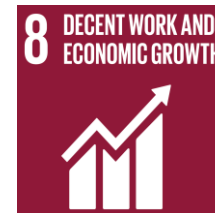
ACCORD
on Fire and Building Safety in Bangladesh

ALLIANCE
FOR BANGLADESH WORKER SAFETY

ARUP

C-TPAT

COMMITMENT TOWARDS SDG



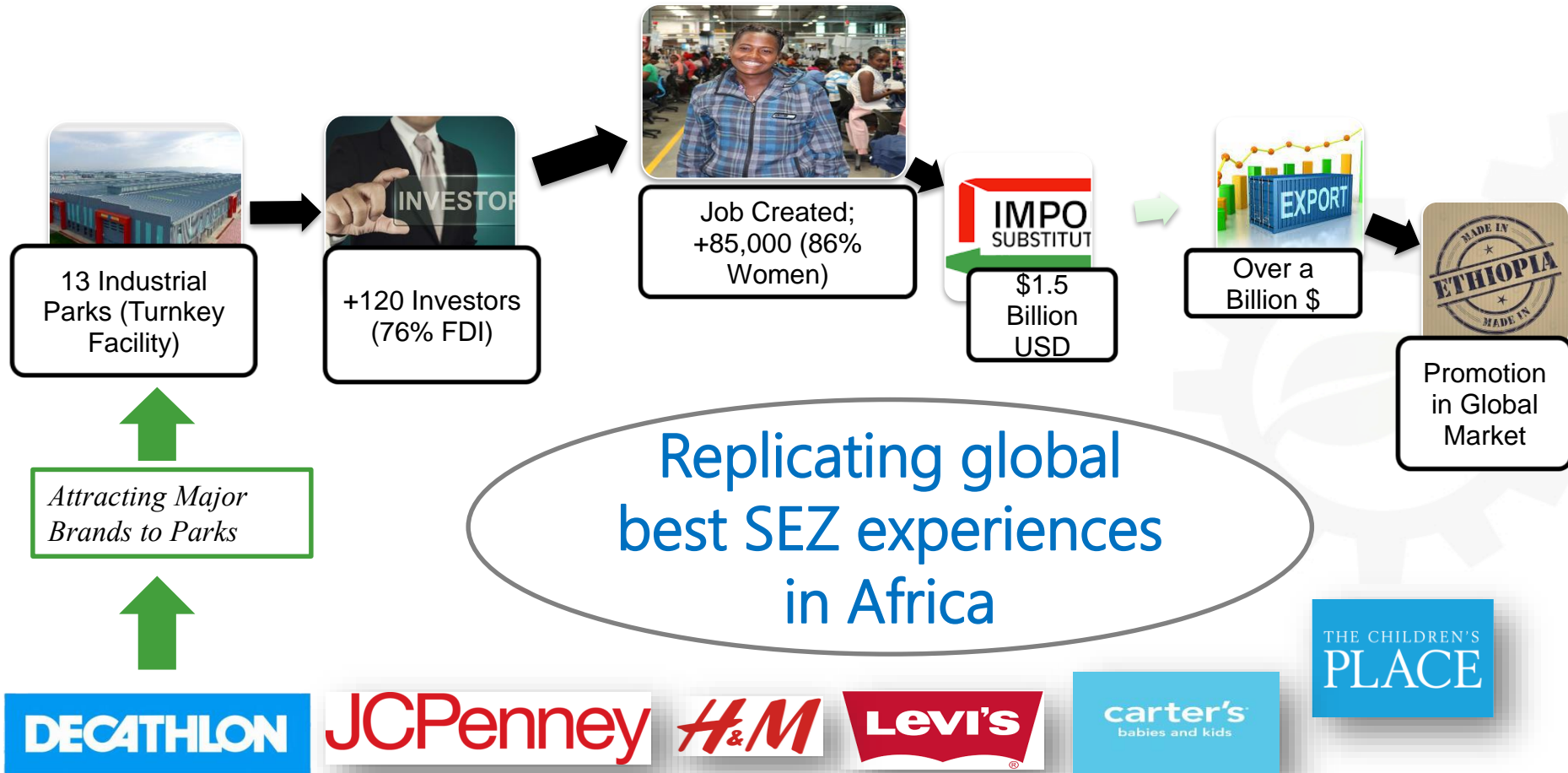
Country	\$/kwh
Kenya	0.137
Egypt	0.037
Tanzania	0.101
Sudan	0.045
Ethiopia	0.023



Water on IPs \$/m3
(for Max. Demand >300m3)

0.038 - 0.55

Remarkable Achievements





Picture: Dire DawaFTZ
Source: IPDC



Picture: Kombolcha Industrial Park
Source: IPDC



Picture: Dire DawaFTZ
Source: IPDC

Anchor Investments

 Carvico

\$300m



 Kingdomtextiles[™]
Dyeing, Finishing, and More



Sourcing from 85,000 SHF


BOORTMALT
\$70m

100% of Malt
Import Substitution























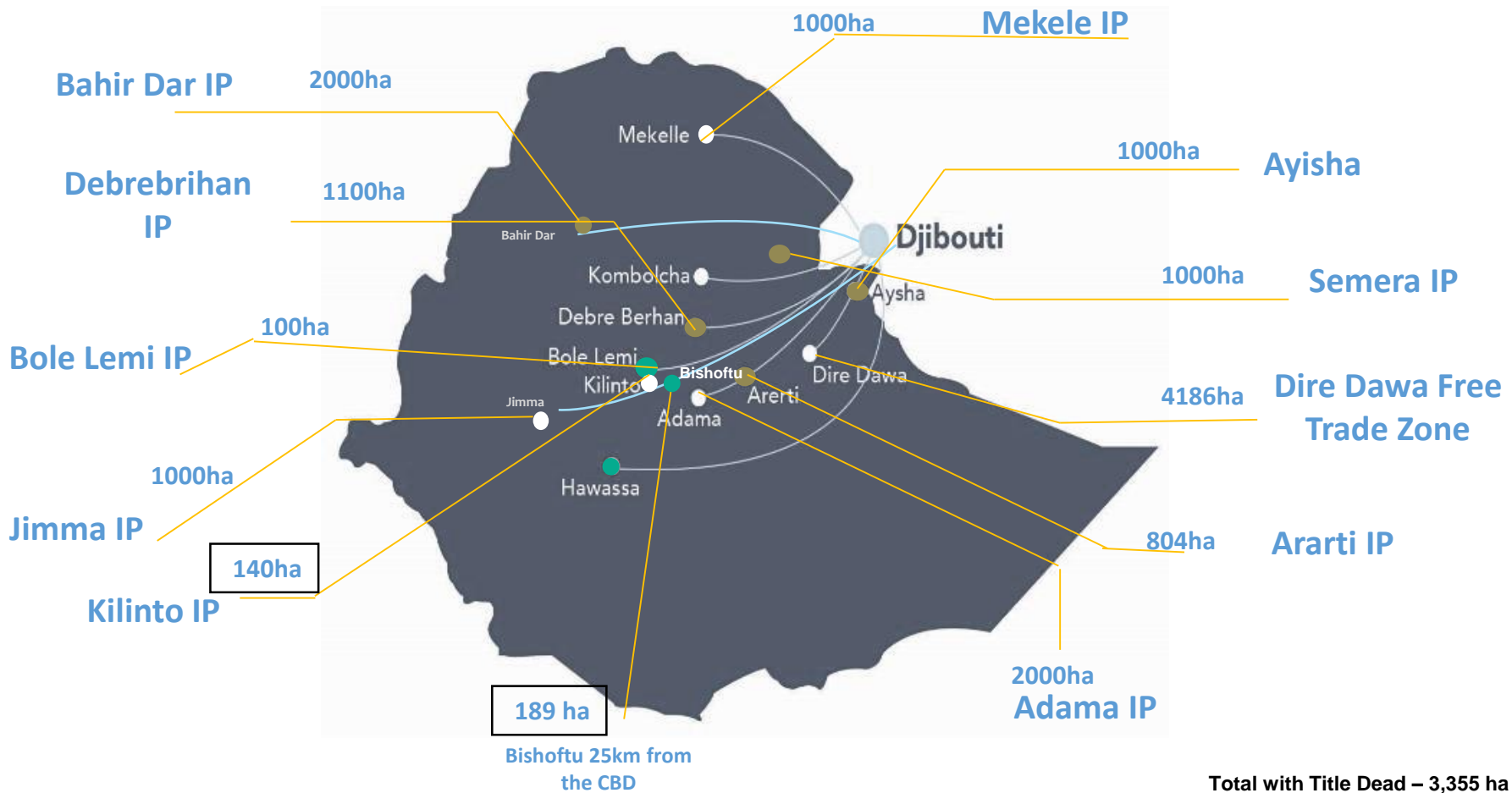








Opportunities in IPDC



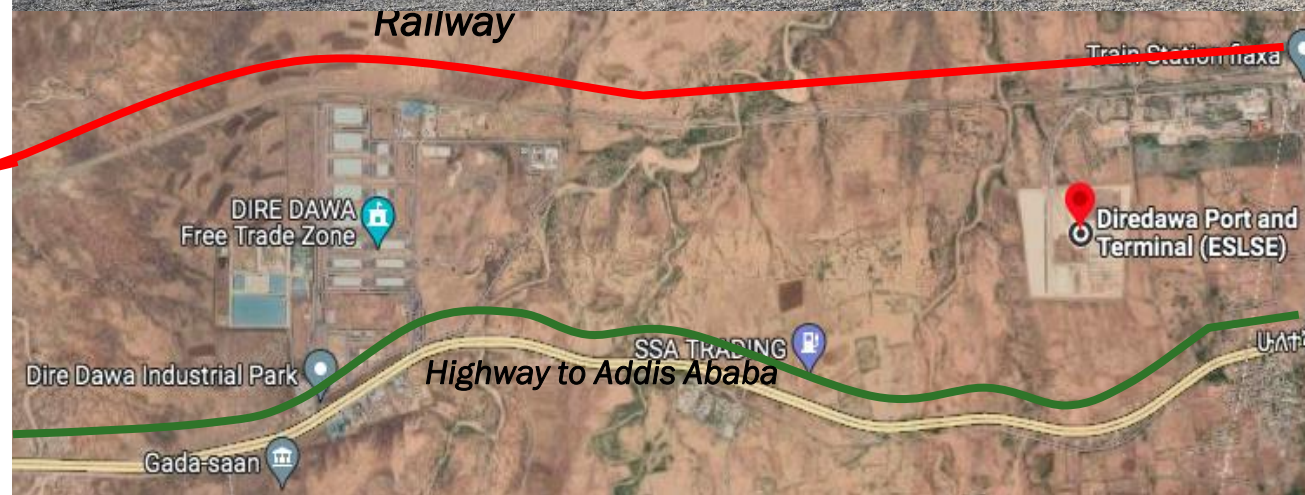
Access to Industrial Land from our Land Bank



Total with Site plan - 18,120ha

Dire Dawa Free Trade Zone

Location : Dire Dawa, Ethiopia ;
325km from Djibouti port, 3 km from Dire Dawa dry port



Area

- Phase I - 15 sheds (92,000 m² of total area) on 154 ha of land
- Phase II - 238 ha Developed land

FTZ Specialization

- Manufacturing
- Trade
- Logistics

Key Principles of the FTZ

- Sustainability
- Import-substitution oriented
- Re-export Processing

Advantage of DDFTZ

- Proximity to Djibouti
- Proximity to DD Dry port
- Quality infrastructure
- Adjacent to Railway line

Build Your Future with Us

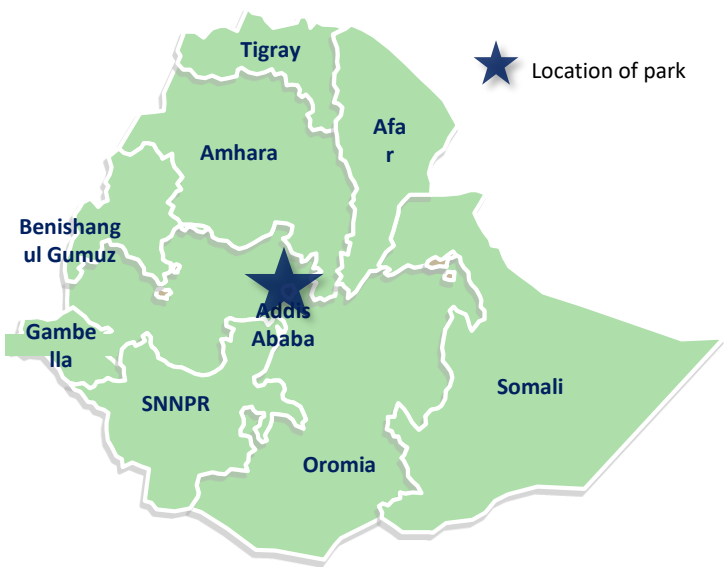
- National Industrial Park special plan development (107 Industrial Parks)
- Commercial and Residential facility development in Existing and New Parks
- Sector and Market Diversification (FTZ, AFCFTA ,EU,DCTS, Asian Market)
- Public Private Participation (Joint Investment, BOOT, DBFM, etc)
- Sustainability Energy Development (Circular Economy, Roof Top Solar Power Generation)



Annex

SOME of INDUSTRIAL PARKS

1 Bole Lemi Industrial Park overview



★ Location of park

Park infrastructure

Land size

- Phase I: 172 Ha
- Phase II: 181 ha

Specialization: Textile and Leather

Sheds overview: 20 sheds in total; 10 (5,500) and 10 (11,000)

Sustainability facilities: Effluent Treatment Plant

Logistics overview: Located in the Capital of Ethiopia with close proximity to Bole International Airport

Labor overview

Population: Over 3 million people

Plan for sourcing and training: The government has set up a catchment area

Housing: Land available without lease price for companies interested to develop dormitories

Cost overview

Water cost: 7.75 to 17.40 ETB/m³ depending on tariff category

Electricity cost: 0.023 USD/Kwh

Sheds lease cost per month: \$3 (1-4th yr), \$3.50 (5-7 yr) \$40 (8 – 10 yrs) and Land lease \$8.75 per m²/year

Park occupancy

Number of companies: 14 Companies

Sheds occupied: All 24 of them

Sheds available: None **Land:- 87 Ha available**

አመሰግናለሁ
Thank you

ありがとう
Arigatō



ለኢኮ ኢንዱስትሪያል ፓርክ
ልማት እንተጋለን!

Striving for eco Industrial
park excellence!

IPDC established 2014

■ Not operational



Bole Lemi IP



Kombolcha IP



IPDC incorporated



Adama IP



Kilinto



Bahir Dar IP

1990

2013

2014

Jan 2017

Aug 2017

Oct 2018

Dec 2018

March 2019

2019

2019

2020

Addis Industrial Village



Hawassa, IP



Dire Dawa IP



Bole lemi II



Mekele IP



Jimma IP



Debre Birhan IP



Semera IP

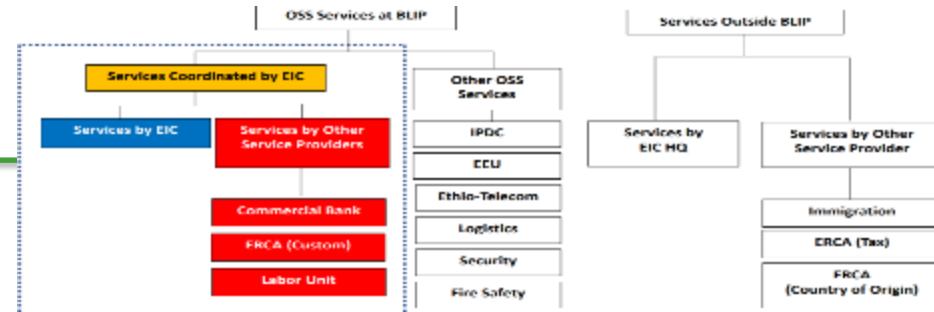


Industrial Parks offer an integrated infrastructure and Services in one location



World Class infrastructure- Modern Factory sheds, Road, electricity, Water, drainage systems telecom services all in one place

One Stop Service (OSS) lets investors get quick services through the integration of the main government institutions delivering vital services for the investors

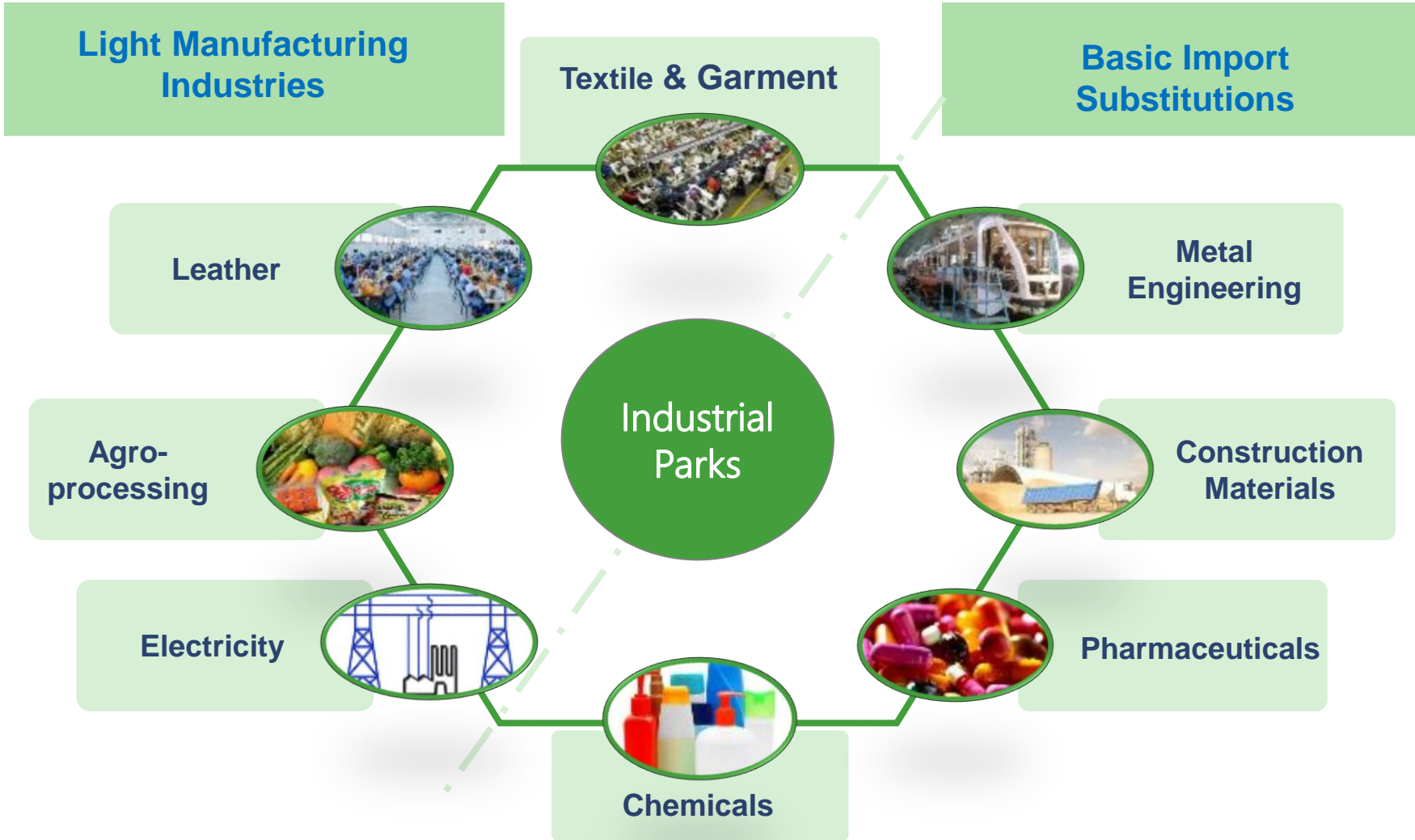


Environment Friendly and Sustainable Production System – Zero liquid discharge (first of it's kind in Africa)

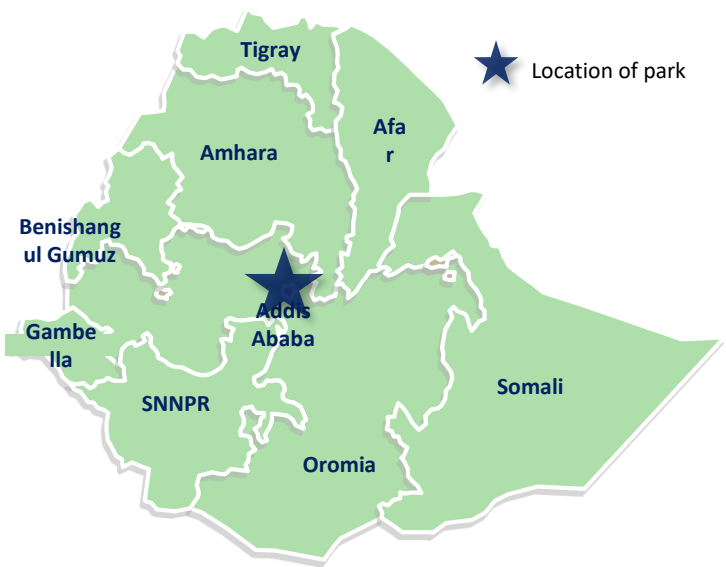
Secured and Safe Living environment - Apartment buildings/green environment



Priority manufacturing industries based on the country comparative advantages



1 Bole Lemi Industrial Park overview



Park infrastructure

Land size

- Phase I: 172 Ha
- Phase II: 181 ha

Specialization: Textile and Leather

Sheds overview: 20 sheds in total; 10 (5,500) and 10 (11,000)

Sustainability facilities: Effluent Treatment Plant

Logistics overview: Located in the Capital of Ethiopia with close proximity to Bole International Airport

Labor overview

Population: Over 3 million people

Plan for sourcing and training: The government has set up a catchment area

Housing: Land available without lease price for companies interested to develop dormitories

Cost overview

Water cost: 7.75 to 17.40 ETB/m3 depending on tariff category

Electricity cost: 0.023 USD/Kwh

Sheds lease cost per month: \$3 (1-4th yr), \$3.50 (5-7 yr) \$40 (8 – 10 yrs) and Land lease \$8.75 per m2/year

Park occupancy

Number of companies: 14 Companies

Sheds occupied: All 24 of them

Sheds available: None **Land:- 87 Ha available**

2 Hawassa Industrial Park overview



Park infrastructure

Land size

- **Phase I and Phase II:** Total 300 ha

Specialization: Textile and Apparel

Sheds overview: 52 sheds in total; 37 (5,500) and 15 (11,000)

Sustainability facilities: Zero Liquid Discharge (ZLD)

Logistics overview: Located in the Southern part of Ethiopia and will soon have a multimodal logistics service provided by DHL and Ethiopian Airlines

Population: Close to 150,000 people

Labor overview

Plan for sourcing and training: The government has set up a catchment area

Housing: Land available without lease price for companies interested to develop dormitories but expat dormitories has been built

Cost overview

Water cost: 1.75 to 11.60 ETB/m³ depending on tariff category

Electricity cost: 0.023USD/Kwh

Sheds lease cost per month: \$2 (1-4th yr), \$2.50 (5-7 yr)
\$2.75 (8 – 10 yrs) and \$3 (11 – 15yrs)

Park occupancy

Number of companies: 22 Companies

Sheds occupied: All 52 of them

Sheds available: None

3 Mekelle Industrial Park overview



★ Location of park

Park infrastructure

Land size

- Phase I: 75 Ha

Specialization: Textile and Apparel

Sheds overview: 15 sheds in total; 4 (3,000), 6 (5,500) and 5 (11,000)

Sustainability facilities: Advanced Conventional Effluent Treatment Plant

Logistics overview: Located in the Northern part of Ethiopia with close proximity to the port of Assab and Massawa

Labor overview

Population: Close to 250,000 people

Plan for sourcing and training: The government has set up a catchment area

Housing: Land available without lease price for companies interested to develop dormitories

Cost overview

Water cost: 1.75 to 11.60 ETB/m³ depending on tariff category

Electricity cost: 0.023USD/Kwh

Sheds lease cost per month: \$2 (1-4th yr), \$2.50 (5-7 yr) \$2.75 (8 – 10 yrs) and \$3 (11 – 15yrs)

Park occupancy

Number of companies: 8 Companies

Sheds occupied: 13

Sheds available: Two 3000 sized shed

4 Kombolcha Industrial Park overview



Park infrastructure

Land size

- Phase I: 75 Ha

Specialization: Textile and Apparel

Sheds overview: 9 sheds in total; 7 (5,500) and 2 (11,000)

Sustainability facilities: Conventional Effluent Treatment Plant

Logistics overview: Located in the North Western part of Ethiopia with close proximity to the port of Djibouti

Labor overview

Population: Close to 150,000 people

Plan for sourcing and training: The government has set up a catchment area

Housing: Land available without lease price for companies interested to develop dormitories

Cost overview

Water cost: 1.75 to 11.60 ETB/m³ depending on tariff category

Electricity cost: 0.023USD/Kwh

Sheds lease cost per month: \$2 (1-4th yr), \$2.50 (5-7 yr), \$2.75 (8 – 10 yrs) and \$3 (11 – 15yrs)

Park occupancy

Number of companies: 6 Companies

Sheds occupied: All 9 of them

Sheds available: None

5 Adama Industrial Park overview



Park infrastructure

Land size

- **Phase I:** Total 365 Ha

Specialization: Multi sectors

Sheds overview: 19 sheds in total; 4 (3,000), 8 (5,500) and 7 (11,000)

Sustainability facilities: Zero Liquid Discharge (ZLD)

Logistics overview: Located only 100 kms away from the capital with very close proximity to the Modjo Dry Port

Labor overview

Population: Close to 220,000 people

Plan for sourcing and training: The government has set up a catchment area

Housing: Land available without lease price for companies interested to develop dormitories

Cost overview

Water cost: 1.75 to 11.60 ETB/m³ depending on tariff category

Electricity cost: 0.023USD/Kwh

Sheds lease cost per month: \$2.75 (1-4th yr), \$3 (5-7 yr) \$3.5 (8 – 10 yrs) and \$4 (11 – 15yrs)

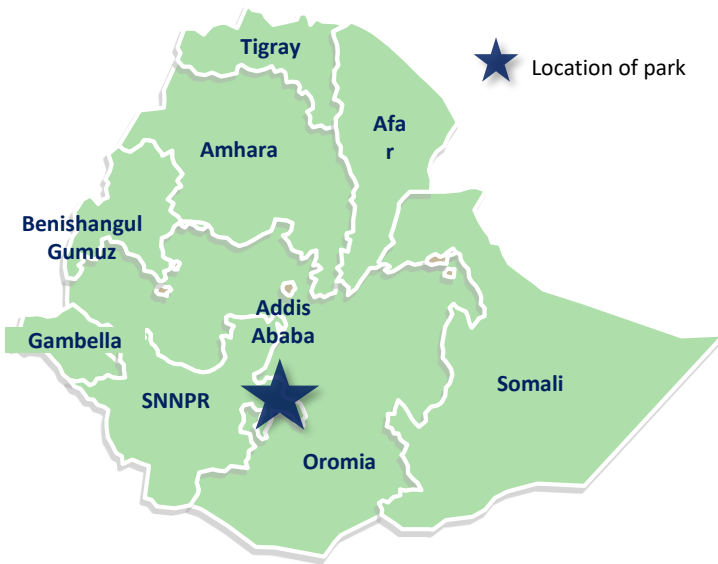
Park occupancy

Number of companies: 8 Companies

Sheds occupied: All 19 of them

Sheds available: None

6 Jimma Industrial Park overview



Park infrastructure

Land size

- **Phase I:** 75 Ha

Specialization: Textile and Apparel and Agro Processing

Sheds overview: 8 sheds in total; 8 (5,500)

Sustainability facilities: Advanced Conventional Effluent Treatment Plant

Logistics overview: Located in the Southern Part of Ethiopia

Labor overview

Population: Close to 130,000 people

Plan for sourcing and training: The government has set up a catchment area

Housing: Land available without lease price for companies interested to develop dormitories

Cost overview

Water cost: 1.75 to 11.60 ETB/m³ depending on tariff category

Electricity cost: 0.023USD/Kwh

Sheds lease cost per month: \$2 (1-4th yr), \$2.5 (5-7 yr)
\$2.75 (8 – 10 yrs) and \$3 (11 – 15yrs)

Park occupancy

Number of companies: 1 Company

Sheds occupied: All 8 of them

Sheds available: None

7 Debre Birhan Industrial Park overview



Park infrastructure

Land size

- **Phase I:** Total 100 Ha

Specialization: Textile & Apparel and Agro Processing

Sheds overview: 8 sheds in total; 8 (5,500)

Sustainability facilities: Advanced Conventional Effluent Treatment Plant

Logistics overview: Located only 130 kms away from the capital

Labor overview

Population: Close to 140,000 people

Plan for sourcing and training: The government has set up a catchment area

Housing: Land available without lease price for companies interested to develop dormitories

Cost overview

Water cost: 1.75 to 11.60 ETB/m³ depending on tariff category

Electricity cost: 0.023USD/Kwh

Sheds lease cost per month: \$2.75 (1-4th yr), \$3 (5-7 yr), \$3.5 (8 – 10 yrs) and \$4 (11 – 15yrs)

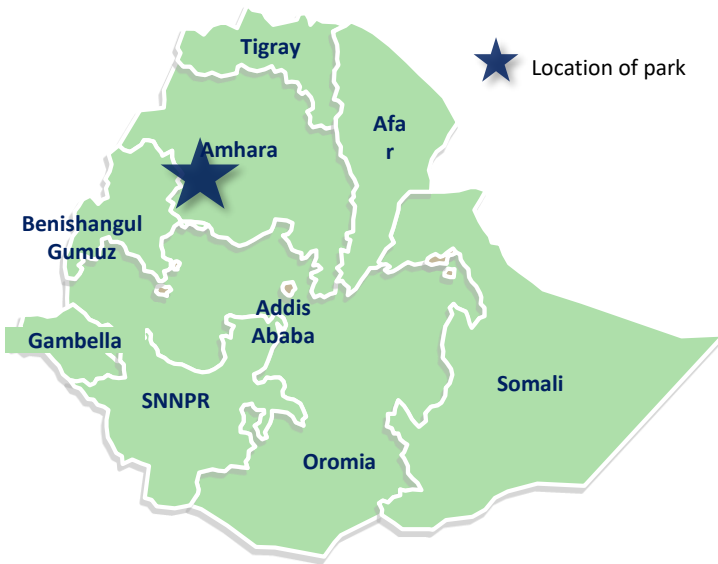
Park occupancy

Number of companies: 4 companies

Sheds occupied: 8

Sheds available: None

8 Bahir Dar Industrial Park overview



★ Location of park

Park infrastructure

Land size

- Phase I: 75 Ha

Specialization: Textile & Apparel

Sheds overview: 8 sheds in total; 8 (5,500)

Sustainability facilities: Advanced Conventional Effluent Treatment Plant

Logistics overview: Located in the textile hub of the country where there is a specialized University specific to T&A

Labor overview

Population: Close to 200,000 people

Plan for sourcing and training: The government has set up a catchment area

Housing: Land available without lease price for companies interested to develop dormitories

Cost overview

Water cost: 1.75 to 11.60 ETB/m³ depending on tariff category

Electricity cost: 0.023USD/Kwh

Sheds lease cost per month: \$2 (1-4th yr), \$2.5 (5-7 yr)
\$2.75 (8 – 10 yrs) and \$3 (11 – 15yrs)

Park occupancy

Number of companies: 1 company

Sheds occupied: 8

Sheds available: None

9 Dire Dawa Industrial Park overview



★ Location of park

Park infrastructure

Land size

- Phase I: 150 Ha

Specialization: Multi sectors

Sheds overview: 15 sheds in total; 5 (3,000), 6 (5,500) and 4 (11,000)

Sustainability facilities: Zero Liquid Discharge (ZLD)

Logistics overview: Located in the Eastern part of Ethiopia with very close proximity to the port of Djibouti and the Addis - Djibouti railway station

Labor overview

Population: Close to 300,000 people

Plan for sourcing and training: The government has set up a catchment area

Housing: Land available without lease price for companies interested to develop dormitories but expat dormitories have been built

Cost overview

Water cost: 1.75 to 11.60 ETB/m³ depending on tariff category

Electricity cost: 0.023 USD/Kwh

Sheds lease cost per month: \$2.75 (1-4th yr), \$3 (5-7 yr) \$3.5 (8 – 10 yrs) and \$4 (11 – 15yrs)

Park occupancy

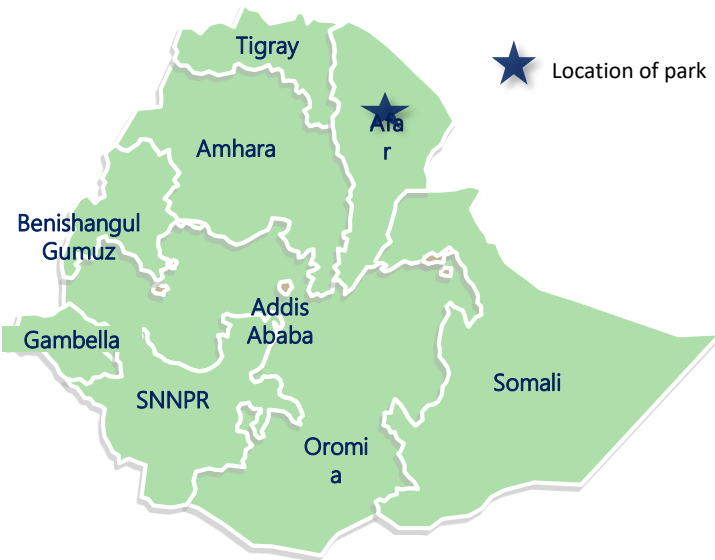
Number of companies: 5 Companies

Sheds occupied: 4

Sheds available: Proposals on all the remaining 11 sheds are being reviewed

10

Semera Industrial Park overview



Park infrastructure

Land size: 2140 Ha
 • Phase I: 50 Ha

Specialization: Integrated Textile and Garment, Leather and Leather Products and manufacturing of Industrial Chemicals.

Sheds overview: 8 sheds of 5,500 meter square

Logistics overview: Located 591 kms North-East of the capital, Addis Ababa,

Labor overview

Plan for sourcing and training: The government has set up a catchment area

Opportunities for Production: cotton, various mineral resources, livestock

Cost overview

Water cost: 1.75 to 11.60 ETB/m3 depending on tariff category

Electricity cost: 0.023 USD/Kwh

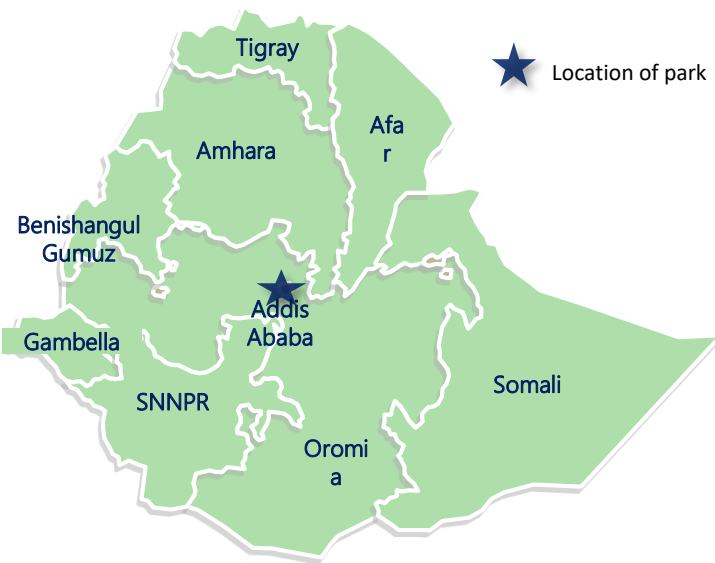
Park occupancy

Number of companies: None

Sheds occupied: None

Sheds available: 8

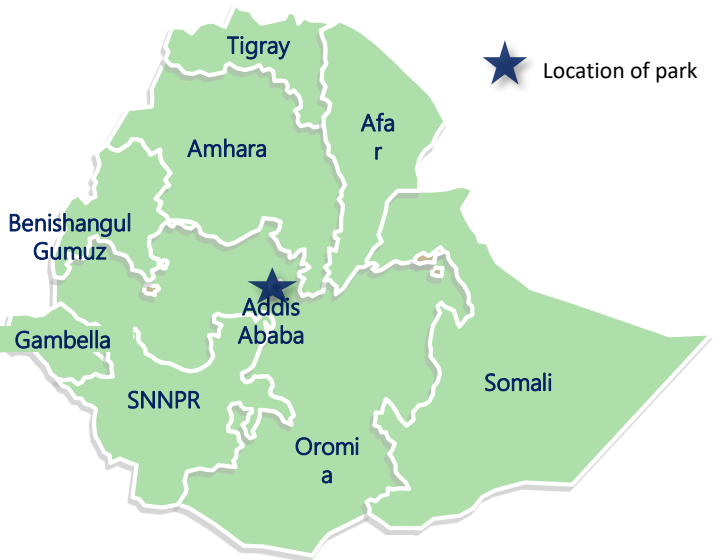
11 Kilinto Industrial Park overview



Park infrastructure	<p>Land size: 279.9 Ha</p> <p>Specialization: Pharmaceutical including drugs, medical supplies</p> <p>Land overview: the park availed ~170 Ha of land for manufacturers</p> <p>Logistics overview: At the heart of Addis Ababa,</p>
Product Focus	<p>Specific zones are identified for operational purpose. Major product classifications are:</p> <ul style="list-style-type: none"> • General products (incl. antibiotics except. Beta lactams), Beta Lactams, Biologics (e.g., vaccines), Manufacturers with large animals in the park (e.g., cows, horses), Active Pharmaceutical Ingredients.
Labor overview	<p>Plan for sourcing and training: The government has set up a catchment area</p> <p>Opportunities for Production: Pharmaceutical packaging, API Manufacturing and the like</p>
Cost overview	<p>Water cost: 1.75 to 11.60 ETB/m³ depending on tariff category</p> <p>Electricity cost: 0.023 USD/Kwh</p>
Park occupancy	<p>Number of companies:</p> <ul style="list-style-type: none"> • 28 companies have signed MoU • 13 have signed land lease agreement • 4 have started project implementation

1
2

ICT Industrial Park overview



Park infrastructure

Land size: 279.9 Ha
Specialization: ICT and IT enabling services.
Land overview: the park availed ~198.77 Ha of land for investors
Logistics overview: At the heart of the capital

Product Focus

ICT Related Business, Technology Related Manufacturing & Warehouse and related.

Labor overview

Plan for sourcing and training: The government has set up a catchment area
Opportunities for Production: Many training centers including two public science and technology universities.

Cost overview

Water cost: 1.75 to 11.60 ETB/m³ depending on tariff category
Electricity cost: 0.023 USD/Kwh

Park occupancy

Number of companies:

- Many enterprises are operating in the park mainly in phone manufacturing, incubation center, database, BPO

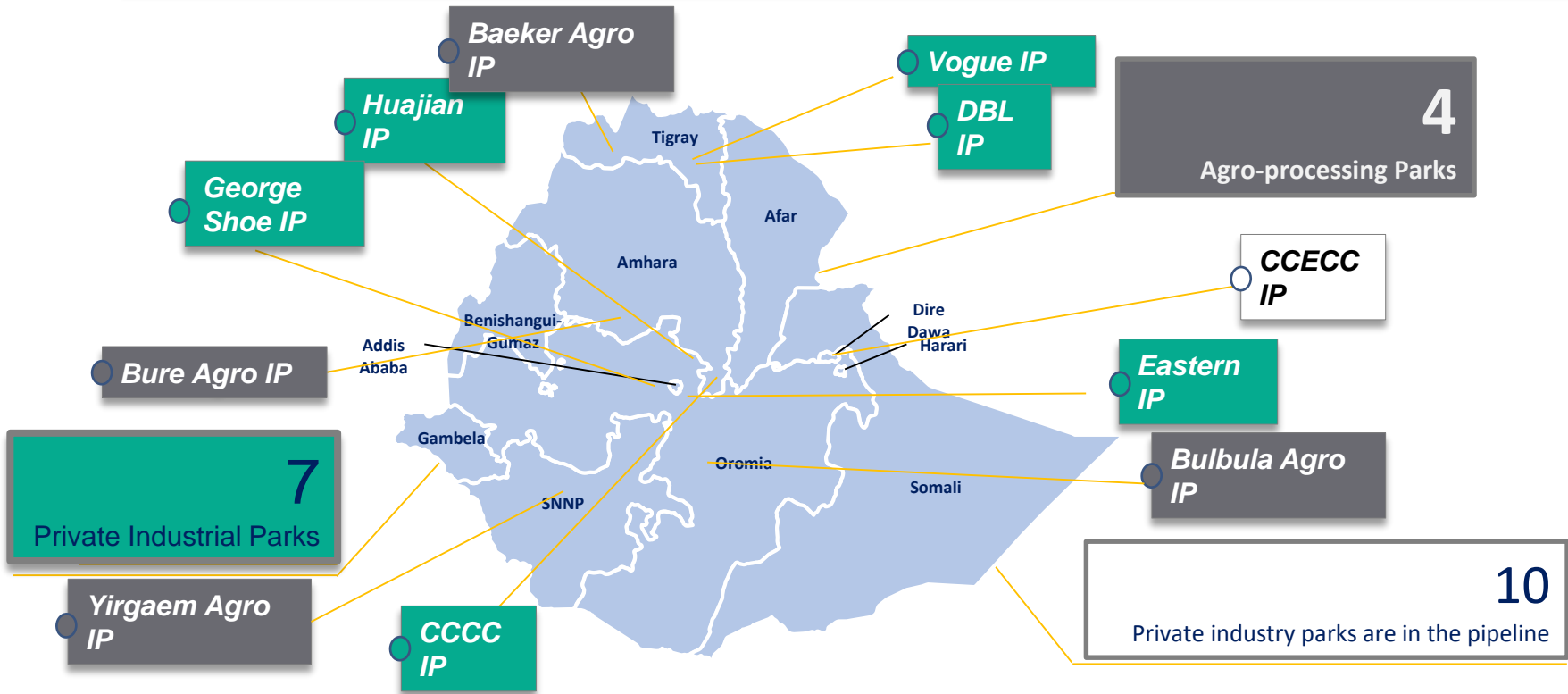




Global brands are sourcing textile and apparel from manufacturing plants in Ethiopia



There are seven private and four agro industrial parks in the country



Private Industrial Parks

1 DBL Industrial Park Overview



Park infrastructure

Land size

- **Phase I:** 78 hectares

Specialization: Textile and Garment

Sheds overview: 5 Sheds

Logistics overview: Located in Mekelle, 932.8 km from Addis Ababa. Railway and dry port are under construction

Labor overview

Population: Over 300,000 people

No. of employed people: 1,950

Housing: Plans to construct dormitories

Cost overview

Water cost: 1.75 to 11.60 ETB/m³ depending on tariff category

Electricity cost: 0.023 USD/Kwh

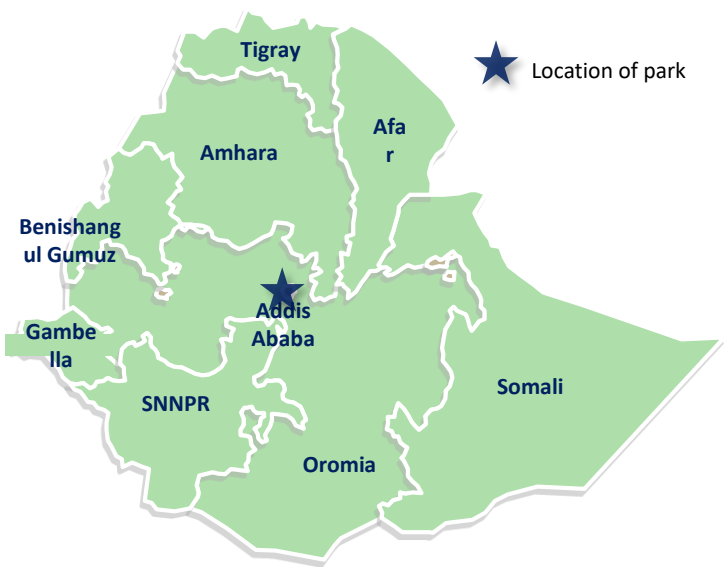
Park occupancy

Number of companies: 3

Sheds occupied: TBA

Sheds available: TBA

2 Huajian Industrial Park Overview



Park infrastructure

Land size
 • **Phase I:** 138 hectares

Specialization: Leather and leather products

Sheds overview: A total of 11 sheds

Logistics overview: Located in Addis Ababa. Easy access to Ethio-Djibouti railway and Modjo dry port

Labor overview

Population: Close to 3.3 million people

No. of employed people: 1,562

Housing: None

Cost overview

Water cost: 1.75 to 11.60 ETB/m³ depending on tariff category

Electricity cost: 0.023 USD/Kwh

Park occupancy

Number of companies: 3 total

Sheds occupied: TBA

Sheds available: TBA

3 George Shoe Industrial Park Overview



Park infrastructure

Land size

- **Phase I:** 80 hectares including tannery

Specialization: Leather and leather products

Sheds overview: Total 5. Construction of 8 sheds is underway

Logistics overview: Located in Addis Ababa. Easy access to Ethio-Djibouti railway and Modjo dry port

Labor overview

Population: Close to 3.3 million people

No. of employed people: 379

Housing: None

Cost overview

Water cost: 1.75 to 11.60 ETB/m3 depending on tariff category

Electricity cost: 0.023 USD/Kwh

Park occupancy

Number of companies: 1

Sheds occupied: TBA

Sheds available: TBA

4 Eastern Industrial Park Overview



Park infrastructure

Land size
 • **Phase I:** 233 hectares

Specialization: Mixed

Sheds overview: 90 sheds

Logistics overview: Located in Dukem, 52 km from Addis Ababa. Easy access to Ethio-Djibouti railway and Modjo dry port

Labor overview

Population: Over 10,000 people

No. of employed people: 16,750

Housing: None

Cost overview

Water cost: 1.75 to 11.60 ETB/m³ depending on tariff category

Electricity cost: 0.023 USD/Kwh

Park occupancy

Number of companies: 110

Sheds occupied: TBA

Sheds available: TBA

5 CCECC Industrial Park Overview



Park infrastructure

Land size

- **Phase I:** 1000 hectares

Specialization: Mixed

Sheds overview: None

Logistics overview: Located in Dire Dawa, 452.9 km from Addis Ababa. Easy access to Ethio-Djibouti railway in Dire Dawa and Dire Dawa dry port which is under construction

Labor overview

Population: Close to 500,000 people

No. of employed people: None

Housing: None

Cost overview

Water cost: 1.75 to 11.60 ETB/m³ depending on tariff category

Electricity cost: 0.023 USD/Kwh

Park occupancy

Number of companies: None

Sheds occupied: TBA

Sheds available: TBA

6 CCCC Industrial Park Overview



Park infrastructure

Land size

- **Phase I:** 100 hectares

Specialization: Construction materials

Sheds overview: Total 2. Construction of 2 sheds is underway

Logistics overview: Located in Menjar Shenkora Woreda, 130 km from Addis Ababa. Within a short km range to Ethio-Djibouti railway and Modjo dry port

Labor overview

Population: Close to 130,000 people

No. of employed people: 500

Housing: None

Cost overview

Water cost: 1.75 to 11.60 ETB/m³ depending on tariff category

Electricity cost: 0.023 USD/Kwh

Park occupancy

Number of companies: 3

Sheds occupied: TBA

Sheds available: TBA

7 Vogue Industrial Park Overview



★ Location of park

Park infrastructure

Land size
 • **Phase I:** 176 hectares

Specialization: Textile and Garment

Sheds overview: Total 2

Logistics overview: Located in Mekelle, 932.8 km from Addis Ababa. Railway and dry port are under construction

Labor overview

Population: Over 300,000 people

No. of employed people: 1,803

Housing: Has constructed dormitories which accommodate up to 4000 workers

Cost overview

Water cost: 1.75 to 11.60 ETB/m3 depending on tariff category

Electricity cost: 0.023 USD/Kwh

Park occupancy

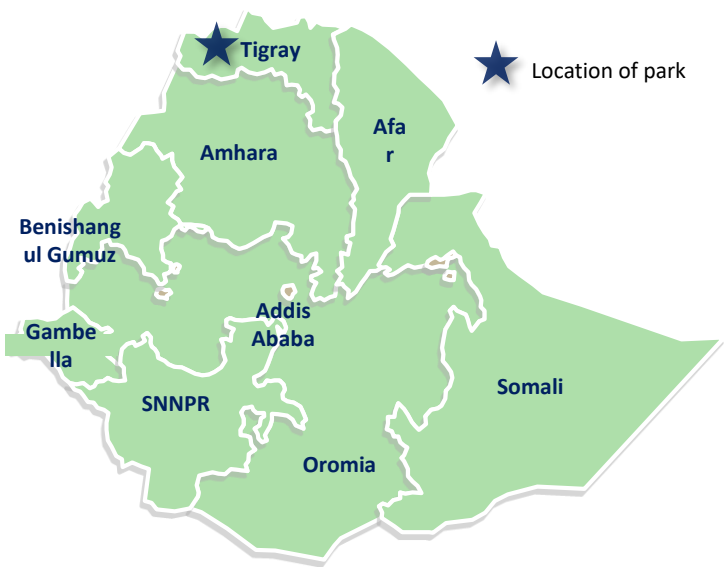
Number of companies: 1

Sheds occupied: TBA

Sheds available: TBA

Integrated Agro Industrial Parks

1 Baeker Agro Industrial Park Overview



Park infrastructure

Land size
 • **Phase I:** 258.62 hectares

Specialization (Crops): Sorghum and Sesame, fruits and vegetables, honey, dairy, meat and other animal products

Sustainability facilities: TBA

Logistics overview: Located in Western Tigray zone. The site abuts the highway which connects Gondar and Humera which are approximately 220 km south east and 35 km north west of the site, respectively

Labor overview

Population: Over 450,000 people

Plan for sourcing and training: TBA

Housing: None

Cost overview

Water cost: 1.75 to 11.60 ETB/m³ depending on tariff category

Electricity cost: 0.023 USD/Kwh

Park occupancy

Number of companies: None

Sheds occupied: TBA

Sheds available: TBA

2 Bure Agro Industrial Park Overview



Park infrastructure

Land size
 • **Phase I:** 260.35 hectares

Specialization (crops): Maize and sesame, fruits and vegetables, dairy, meat and other animal products

Sustainability facilities: TBA

Logistics overview: Located in East Gojam zone. The site adjoins the federal highway no. 3 which is approximately 400 km north of Addis Ababa.

Labor overview

Population: Over 2,600,000 people

Plan for sourcing and training: TBA

Housing: None

Cost overview

Water cost: 1.75 to 11.60 ETB/m³ depending on tariff category

Electricity cost: 0.023 USD/Kwh

Park occupancy

Number of companies: 2

Sheds occupied: Occupied

Sheds available: Only land

3 Bulbula Agro Industrial Park Overview



★ Location of park

Park infrastructure

Land size
 • **Phase I:** 258.62 hectares

Specialization (crops): Sorghum and sesame, fruits and vegetables, honey, dairy, mat and other animal products

Sustainability facilities: TBA

Logistics overview: Located in Eastern Shewa zone. The site abuts the federal highway no. 7 connecting Addis Ababa and Hawassa which are approximately 180 km north and 85 km south of the site, respectively

Labor overview

Population: Over 1,800,000 people

Plan for sourcing and training: TBA

Housing: None

Cost overview

Water cost: 1.75 to 11.60 ETB/m³ depending on tariff category

Electricity cost: 0.023 USD/Kwh

Park occupancy

Number of companies: None

Sheds occupied: Occupied

Sheds available: Land is available

4 Yirgalem Agro Industrial Park Overview



Park infrastructure

Land size

- **Phase I:** 176 hectares

Specialization (crops): Cereals, coffee, fruits and vegetables, dairy, meat and other animal products

Sustainability facilities: TBA

Logistics overview: Located in Sidama. It is located approximately 1.5 km from the federal highway no. 8. The site is situated approximately 318 km from Addis Ababa.

Labor overview

Population: Over 3,700,000 people

Plan for sourcing and training: TBA

Housing: None

Cost overview

Water cost: 1.75 to 11.60 ETB/m³ depending on tariff category

Electricity cost: 0.023 USD/Kwh

Park occupancy

Number of companies: 1

Sheds occupied: Occupied

Sheds available: Land is available

አመሰግናለሁ
Thank you

ありがとう
Arigatō



ለኢኮ ኢንዱስትሪያል ፓርክ
ልማት እንተጋለን!

Striving for eco Industrial
park excellence!