



**MALAWI:
A JOURNEY
TOWARDS A
SUSTAINABLE AND
COMPETITIVE
SOURCE OF LEAF**

The JT Group

Our parent company

- JT was established in 1985.
- In 1999 JT acquires the non-U.S. tobacco business of RJR Nabisco Inc. and JTI is founded.
- JT Group includes the Japanese domestic and international tobacco businesses, as well as the processed food and pharmaceutical businesses
- JT Group has circa 55,000 employees worldwide, including JTI.
- Around 33% owned by the Japanese government, making it the largest shareholder.

Tobacco



Processed Food



Pharmaceuticals



JTI today



We have employees in over 70 countries around the world



RESEARCH &
DEVELOPMENT CENTERS

Figures of March 2022



FINISHED GOODS AND
TOBACCO-RELATED
FACTORIES



COUNTRIES WHERE WE
SOURCE TOBACCO LEAF

OUR AGRONOMY OPERATIONS

Leading in grower agronomy extension services

294

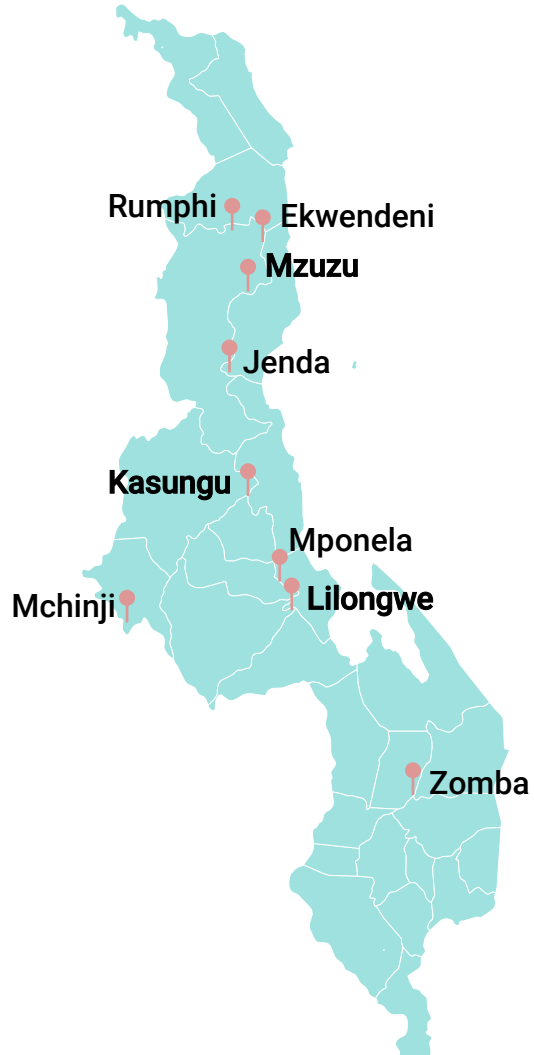
PERMANENT
EMPLOYEES

>1,000

SEASONAL
EMPLOYEES

129

AGRONOMY
STAFF



8,773

GROWERS
(>95% retention)



11,755 HA

CONTRACTED LAND



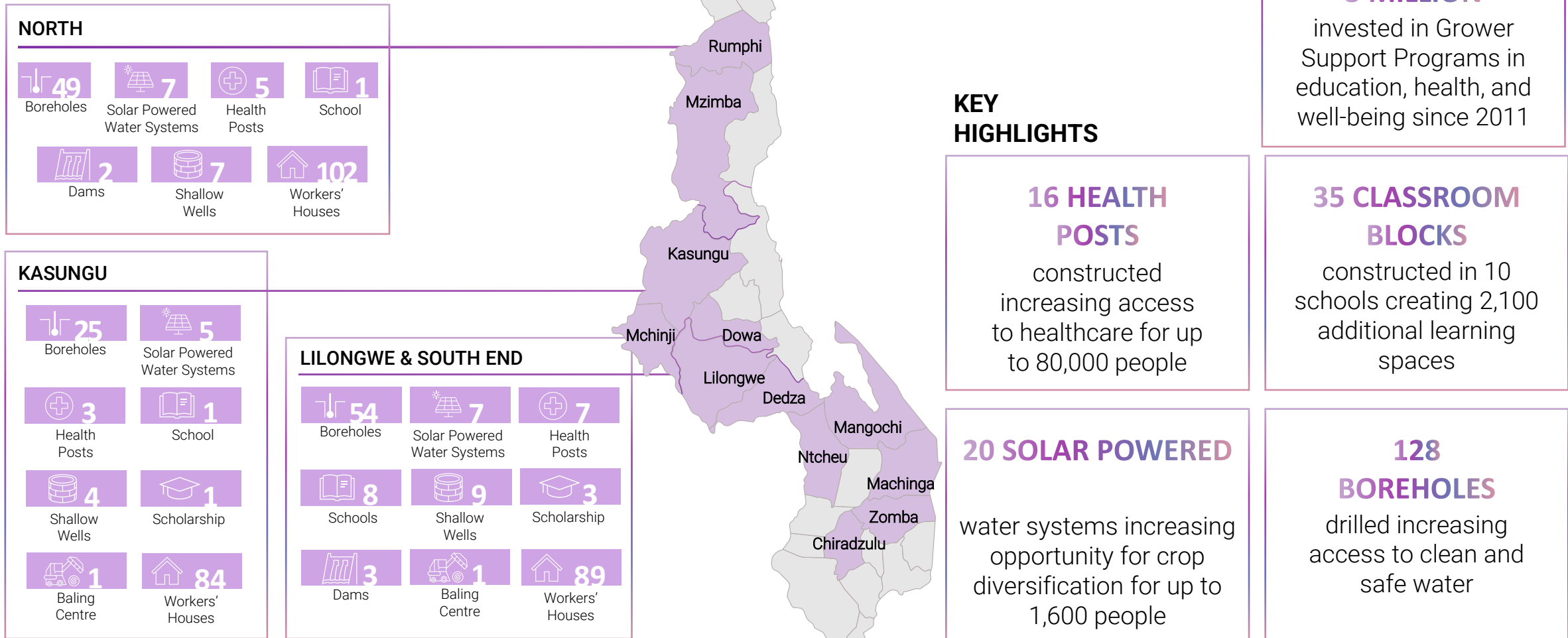
US\$16.7MM

INPUTS LOAN
PORTFOLIO
INVESTMENT



OUR GROWER SUPPORT PROGRAMS

A snapshot of our community investments in support of long term sustainability



CONCLUDING REMARKS

Maintaining business sustainability amidst challenging operating environment



- Better regulation key to maintaining conducive business environment
- Managing supply chains to ensure business sustainability

πi